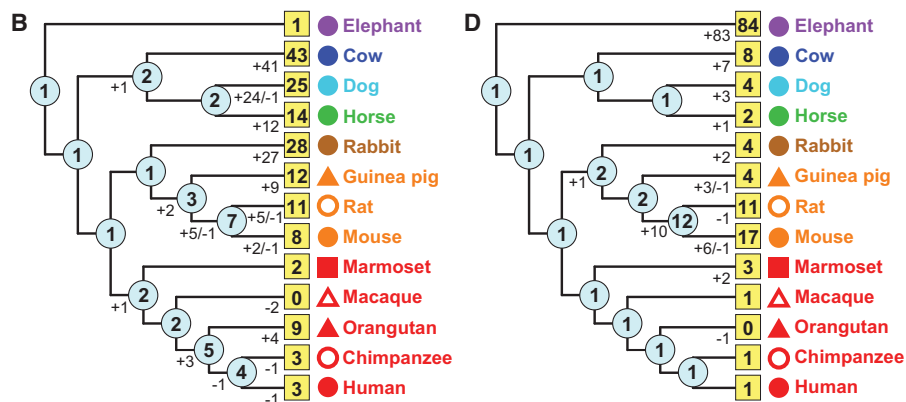


Corrigendum

Genome Research 24: 1485–1496 (2014)**Corrigendum: Extreme expansion of the olfactory receptor gene repertoire in African elephants and evolutionary dynamics of orthologous gene groups in 13 placental mammals**

Yoshihito Niimura, Atsushi Matsui, and Kazushige Touhara

In the above-mentioned article, the colored symbols in Figure 3B and D are wrongly placed. In addition, in Figure 3B the numbers of genes for dogs and horses are interchanged. The corrected panels B and D in Figure 3 are provided below. This correction does not affect any of the conclusions of the paper. The authors apologize for any confusion caused by these errors.



doi: 10.1101/gr.193219.115



Corrigendum: Extreme expansion of the olfactory receptor gene repertoire in African elephants and evolutionary dynamics of orthologous gene groups in 13 placental mammals

Yoshihito Niimura, Atsushi Matsui and Kazushige Touhara

Genome Res. 2015 25: 926

Related Content	Extreme expansion of the olfactory receptor gene repertoire in African elephants and evolutionary dynamics of orthologous gene groups in 13 placental mammals Yoshihito Niimura, Atsushi Matsui and Kazushige Touhara Genome Res. September , 2014 24: 1485-1496
Open Access	Freely available online through the <i>Genome Research</i> Open Access option.
Creative Commons License	This article is distributed exclusively by Cold Spring Harbor Laboratory Press for the first six months after the full-issue publication date (see http://genome.cshlp.org/site/misc/terms.xhtml). After six months, it is available under a Creative Commons License (Attribution-NonCommercial 3.0 Unported License), as described at http://creativecommons.org/licenses/by-nc/3.0/ .
Email Alerting Service	Receive free email alerts when new articles cite this article - sign up in the box at the top right corner of the article or click here .

Gene Link™ All Modifications and Oligo Types Synthesized
Long Oligos • Fluorescent • Chimeric • DNA • RNA • Antisense
Oligo Modifications?
Your wish is our command.

To subscribe to *Genome Research* go to:
<http://genome.cshlp.org/subscriptions>
